

A black retail terminal with a screen and a scanner. The screen displays "Poslab Technology Corp." and "--- Welcome ---". The scanner is on the left side. The terminal is mounted on a stand.

Poslab Technology Corp.
--- Welcome ---

poslab

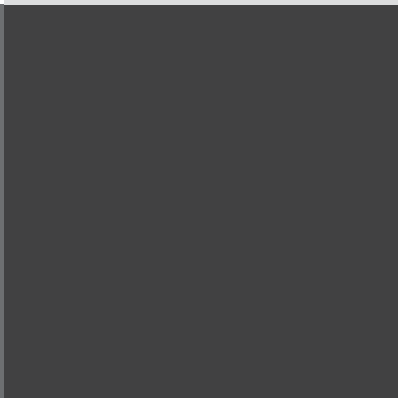
METPOS[®]
KASSENSYSTEME



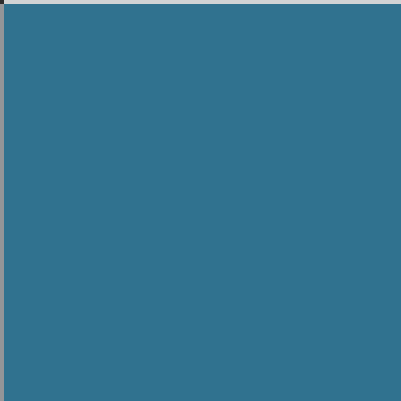
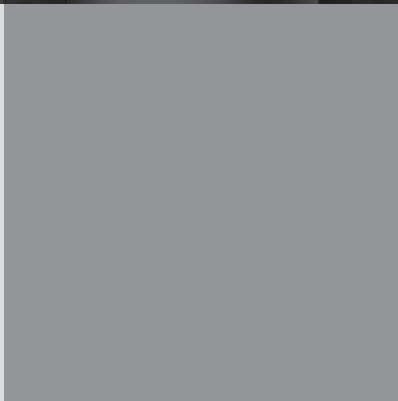
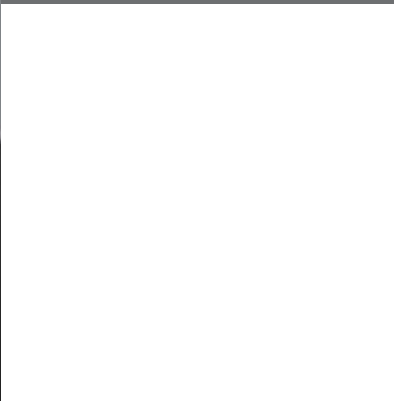
MSR & i Button



Support Thermal Printer.



**High Brightness
VFD Display**



Light and Stylish Design

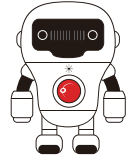
METPOS[®]

KASSENSYSTEME



Ready in X86 Windows

- 15" flat touch screen technology
- Intel® Bay-Trail J1900
- 100% Fan-less design
- Elegant with small foot print design



System	
CPU Support	Intel® Celeron® Processor Bay-Trail J1900 up to 2.42Ghz
Memory	Support up to 8GB DDR3
Core Logic	Intel® Bay-Trail
Net Work	10/100/1000 Base-T Fast Ethernet
Power Supply	12V Power Adaptor
System weight	5.8 Kgs
Dimension	384 x 324 x 194 (WxHxD) mm
O/S	Windows7, POSReady 7, Windows 8, Windows 10
Storage	
HDD	1 x 2.5" SATA HDD
SSD	SSD SATA Interface Max.1TB
I/O Ports	
Serial Ports	3 x external COM
USB Ports	4 x external USB Ports
mPCIe	-
Ethernet	1 x 10/100/1000 Mbps (RJ45)
PS/2	-
VGA	1 x DB-15 VGA Interface
Parallel Port	-
Audio	-
Cash Drawer	1 x RJ11 (12V)
DC-IN	12V DC-IN
Power Switch	1 x Power Switch
Display	
LCD	15" TFT LCD Panel
Max. Resolution	1024 x 768
Brightness	250 nits
Touch Screen	5 wire resistive touch panel (Flat Touch Screen)
Environmental	
Operating Condition	0°C ~ 40°C, 20%RH ~ 90%RH
Storage Condition	-20°C ~ 60°C, 10%RH ~ 90%RH
Peripheral Options	
Printer	3" Thermal Printer (TP-260 , Printing speed 260mm/s)
Customer Display	VFD Type, 20 columns x 2 lines, each column 5x7 dotsRS232 (Default) , Multi-language / Epson Commands
MSR	JIS-I or II, ISO Track 1 / 2 / 3 USB (default)
i-button	-
Color	Black
Wireless LAN	-
RFID	-
Scanner	-
Safety standards	CE/FCC

Models Features



Lcd Led Backlight



VFD Customer Display



Magnetic Stripe Card

Peripheral Options



Lcd Led Backlight



VFD Customer Display



Magnetic Stripe Card



Barcode Scanner



Thermal Printer

I/O Ports

